

Butler

Design | **Jangir Maddadi**



When Jangir designed our new product, Butler, it was not primarily intended as just a waste bin. It would create both identity and a sense of good design where it was placed. A waste bin you do not want to hide, as it both strengthens and beautifies the environment with its peculiar shape. The bin can be placed alone or in a group.

Butler consists of an outer shell in fibreglass with a simple frame of Swedish steel. The shell, which is very shock-resistant, is easy to lift off when changing the waste bag. Butler is ideal for offices, shopping malls, hotels, schools, universities and other public spaces. Butler is made in two sizes, Small 46L and Large 116L.



Frame: Powder-coated steel.
Shell: Fibreglass.

Butler Small, white

Outer shell in white fibreglass, black inner frame in RAL 9005. 46L.
Recommended waste bag 70-85L.

Colour	Dimensions	Art no.
RAL 9010 Pure white	543x668x543	330101

Any RAL colour at additional cost, contact TreCe.

Butler Large, white

Outer shell in white fibreglass, black inner frame in RAL 9005. 116L.
Recommended waste bag 125 L.

Colour	Dimensions	Art no..
RAL 9010 Pure white	562x850x562	330201

Any RAL colour at additional cost, contact TreCe.

Accessories

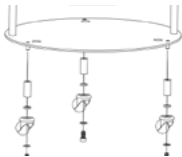
Name		Colour	Art no..
Butler floor attachment	3 black Z profiles for floor attachment in RAL 9005. Attached between the legs and the base.	Black	330198
Butler with wheels	3 black wheels with legs in RAL 9005	Black	330199



Legs (standard)



Floor attachment



Wheels



Black inner frame in RAL 9005.

Name	Dimensions	Colour	Art no..
Butler Small Symbol sheets, text in english	9 symbols 73x50	Grey	330312
Butler Large Symbol sheets, text in english	9 symbols 98,5x68	Grey	330322



The symbols are produced in UV-resistant plastic and have a transparent base. The symbols are shaped to simplify attachment. The symbol sheets are packed with the gods but not applied before shipping.



METAL



ORGANIC



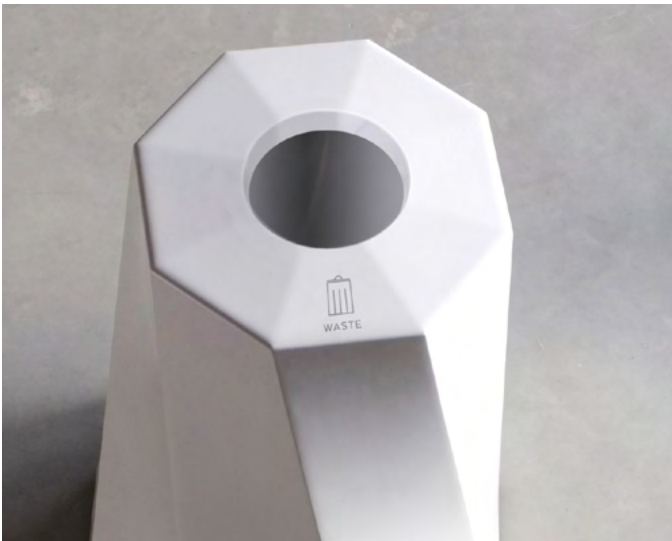
PAPER



PLASTIC



WASTE



QUICK INFO.

Content	Certification TreCe	Certification TreCe
Environmental & social aspects	ISO 9001:2015	ISO 14001:2015
Country of manufacture	Recycled material	
Sweden	20% recycled steel (frame)	

SVHC/ECHA's candidate list

No chemicals included in ECHA's candidate list of SVHC may be contained in levels of >0.1% by weight in the components, parts or chemicals that are included or used in the manufacturing of the furniture/product. See <http://echa.europa.eu/en/candidate-list-table>

Metal – leg and wheel stand

The frame consist of cold-rolled steel plate and are manufactured in Sweden. In the production of steel blanks, 20% recycled material is used together with iron raw material ore (80%). The steel plate meets the requirements in table 1.

Table 1: Requirements metal

Requirements	Complies
Metal that will have prolonged contact with skin (e.g. armrests) must not consist of alloys containing nickel, chromium III or chromium VI.	X

Powder coating - leg and wheel stand

Butler's leg and wheel stand is painted in a powder coating which provides both environmental and quality benefits as no solvents need to be added and the amount of waste is very small. In addition, the powder coating gives a durable and stylish finish. Fulfilled requirements are shown in tables 2 and 3. Safety data sheets according to REACH CLP-regulation no1272/2008 are sent on request.

Table 2: Requirements surface treatment

Requirements	Complies
The content of aromatic solvents / hydrocarbons in surface treatment products / preparations may not exceed 1.0% by weight.	X
Surface treatment with preparations containing VOC may have a maximum applied VOC component of 60 g / m ² for office / public / outdoor environment.	X

Table 3: Hazard class and hazard statement according to Regulation 790/2009

Hazard category	Hazard statement according to regulation 790/2009	Complies
Acute toxicity	H300, H301, H310, H311, H330, H331	X
Toxic to body organs	H370, H371, H372, H373	X
Carcinogenic	H350, H351	X
Mutagenic	H340, H341	X
Toxic for reproduction	H360, H361	X
Allergenic	H334	X
Dangerous to the environment	H400, H410, H411, H412, H413 If the use of surface treatment products is required for technical reasons, products labelled as dangerous to the environment (H400, H410, H411, H412, H413) may be acceptable if the content of environmentally hazardous substance <14 g/per m ² of surface.	X

Plastic – shell

The shell consist of plastic fibreglass mixture and meets the requirements in Table 4.

Table 4: Requirements plastic

Requirements	Complies
Free from PVC (polyvinyl chloride)	X
Softeners/phthalates classified as hazard classification H360 have not been actively added or that the measured level does not exceed 0.1% by weight/substance and component.	X
Short-chain chlorinated paraffins (SCCPs) must not be actively added or that the measured level must not exceed 0.01% by weight/substance and component.	X
The following flame retardants have not been actively added or that the measured level does not exceed 0.1% by weight/substance and component.	X
<div> <div>Polybrominated biphenyls (PBBs)</div> <div>CAS-nr: 59536-65-1</div> </div> <div> <div>Decabromodiphenyl ether (dekaBDE)</div> <div>CAS-nr: 1163-19-5</div> </div> <div> <div>Pentabromodiphenylether (pentaBDE)</div> <div>CAS-nr: 32534-81-9</div> </div> <div> <div>Oktabromodiphenylether (oktaBDE)</div> <div>CAS-nr: 32536-52-0</div> </div> <div> <div>Tris (2,3-dibromopropyl) phosphate (TBPP)</div> <div>CAS-nr: 126-72-7</div> </div> <div> <div>Tris (1-aziridiny) phosphine oxide (TEPA)</div> <div>CAS-nr: 5455-55-1</div> </div> <div> <div>Hexabromocyclododecane (HBCDD)</div> <div>CAS-nr: 25637-99-4</div> </div> <div> <div>Tris (2 chlorethyl) phosphate (TCEP)</div> <div>CAS-nr: 115-96-8</div> </div>	
No pigments containing lead, cadmium, tin, chromium VI or mercury have not been actively added or that the measured level does not exceed 0.01% by weight per component.	X

Social responsibility

We have ensured that this product is manufactured under good conditions, ie. with regard to social and ethical issues such as working conditions, human rights, labour, environment and corruption. We have sent these requirements to our suppliers and subcontractors, who have each certified that they are followed. A summary is shown in table 5 and applies to the entire manufacture process of a product and it's components. The starting point is the UN guidelines on the "Code of Conduct" and Möbelfakta's requirements for Social Responsibility are formulated on the basis of the UN's Global Compact. As well as conditions for social and ethical considerations regarding tax irregularities and illegal labour. The principles are based on below;

- UN Universal Declaration of Human Rights
- Rio Declaration on Environment and Development
- International Labour Organization (ILO) eight core conventions on human and labour rights
- UN Convention against Corruption
- Work environment requirements based on ILO conventions on health and safety

Table 5: Summary requirements for social responsibility

Requirements	Complies
Legislation	The furniture and its components must be manufactured in accordance with national legislation. X
Human Rights	Producers, manufacturers and suppliers operations must comply with human rights. X
Working conditions	Wages, child labour, conditions of employment, working hours, benefits, penalties, freedom of association, forced labour and discrimination. X
Working environment	The company must constantly strive to improve the working environment and workplace safety for its employees. X
Environment	Identify environmental impact, work actively with environmental issues and involve staff. Procedures for law compliance must be in place and followed up. X
Anti-corruption	No form of extortion, corruption, bribery or favoritism to or from employees or organizations is tolerated. X
Tax irregularities /fraud	In addition to the statutory obligations applicable to the employees concerned, shall also anti-labour and tax fraud are applied, such as illegal workers. X
Undeclared/illegal labour	No undeclared/illegal labour shall be hired to preform product manufacturing. X