

Citadel

100% Polypropylene FR
320 g/rm



CI01 (FL019) jet black
CI11 (FL768) anthracite
CI15 (FL824) grey brown
CI22 (FL757) sapphire blue
CI31 (FL832) platinum grey
CI42 (FL830) azure blue
CI43 (FL826) wine red
CI61 (FL833) black grey

Era

100% Polyester
448 g/rm



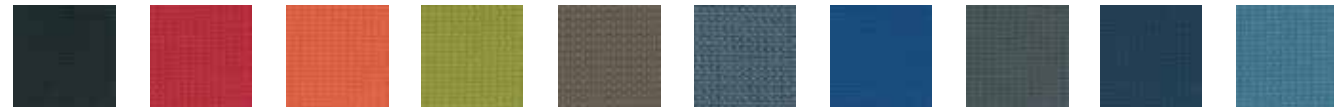
ER01 (CSE14) jet black
ER02 (CSE08) brilliant blue
ER03 (CSE19) beige red
ER04 (CSE16) may green
ER05 (CSE21) sepia brown
ER06 (CSE03) lemon yellow
ER11 (CSE13) quartz grey
ER12 (CSE20) pastel turquoise
ER13 (CSE09) red lilac
ER21 (CSE02) grey beige
ER22 (CSE12) signal blue



ER23 (CSE05) deep orange
ER31 (CSE11) platinum grey
ER33 (CSE06) raspberry red

Manhattan

100% recycled Polyester
400 g/rm



MH01 (Y1009) graphite black
MH03 (Y1362) flame red
MH13 (Y1113) traffic orange
MH14 (Y1188) may green
MH25 (HY1392) beige grey
MH31 (Y1389) blue grey
MH32 (Y1386) ultramarine blue
MH41 (Y1363) iron grey
MH62 (Y1026) cobalt blue
MH72 (HY1391) pastel blue

Mesh

100 % Polyester
580 g/rm



KW40 uni, black
KW44 uni, white
KW48 anthracite
KW23 flame red
KW13 traffic orange
KW14 may green
KW25 beige grey
KW62 cobalt blue
KW72 pastel blue

Fabric group 1

Lucia

100% Polyester
400 g/rm



5800 (YP009) black
5801 (YP019) traffic grey
5803 (YP026) sapphire blue
5805 (YP106) ruby red
5811 (YP110) maize yellow
5816 (YP076) vermilion
5824 (YP011) ocean blue
5832 (YP082) blue
5814 (YP112) mint turquoise
5823 (YP051) bordeaux

King

100% Polyester (Trevira CS)
365 g/rm



KI01 (8033) black brown
KI03 (4027) signal red
KI11 (8510) grey brown
KI14 (7519) fern green
KI15 (2514) ochre yellow
KI43 (3094) vermilion
KI62 (6617) night blue

Fabric group 2 (further on the next page)

Royal

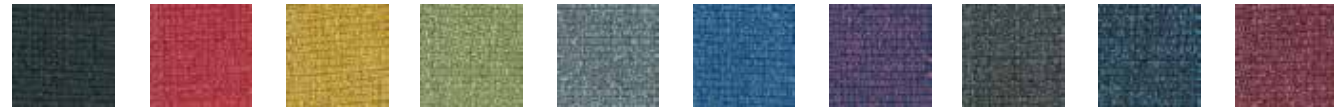
100% Polyester
450 g/rm



RO01 (PS004) jet black
RO11 (PS030) graphite grey
RO14 (PS026) pale green
RO22 (PS033) violet blue
RO53 (PS011) ruby red
RO61 (PS002) beige grey

Medley

100% Polyester
510 g/rm



MD01 (60999) black grey
MD03 (64019) traffic red
MD06 (62002) broom yellow
MD14 (68114) green beige
MD21 (66008) squirrel grey
MD22 (66009) violet blue
MD23 (65012) red lilac
MD31 (60004) graphite grey
MD32 (66010) steel blue
MD43 (64125) signal red

Amalfi

13,85% PES
86,15% PVC
910 g/rm

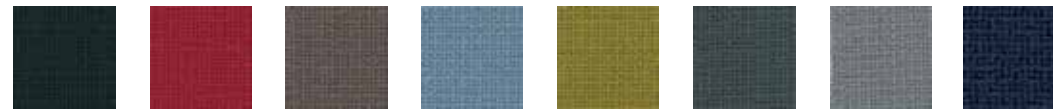


AM01 (008716) signal black
AM05 (008719) nut brown
AM06 (008731) sun yellow
AM07 (008717) cream
AM12 (014128) pastel blue
AM13 (008732) signal red
AM14 (014129) pastel green
AM16 (014131) zinc yellow
AM17 (008714) light ivory
AM22 (008720) steel blue
AM33 (008726) pastel yellow

Fabric group 2

Fame

95% New wool
5% Polyamide
630 g/rm



FA01 (60999) jet black
FA13 (64089) signal red
FA15 (61135) pale brown
FA32 (66130) pigeon blue
FA44 (68004) honey yellow
FA61 (60003) anthracite grey
FA91 (60078) dusty grey
FAA2 (66061) black blue

Field

100% Polyester (Trevira CS)
430 g/rm



FI03 (662) carmine red
FI32 (762) ultramarine blue
FI41 (182) black grey
FI51 (192) black
FI81 (132) graphite grey

Climatex Ultra

72% Cradura™
16% Certified Virgin Wool
12% Redesigning Lenzing FR™
437 g/rm



UL01* (491 008-999) traffic black
UL02* (491 008-575) cobalt blue
UL03 (491 008-353) traffic red
UL04 (491 008-696) patina green
UL05 (491 008-792) black brown

Fabric group 3

* These fabrics are also available in conductive form (for Hero and Goal).

In brackets: Order number of the manufacturer.

Synergy

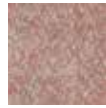
95% New wool
5% Polyamide
560 g/rm



YS01
(LDS16)
quartz grey



YS02
(LDS62)
violet blue



YS03
(LDS74)
light pink



YS04
(LDS46)
pastel green



YS05
(LDS32)
grey beige



YS11
(LDS27)
traffic black



YS13
(LDS07)
pastel violet



YS15
(LDS33)
pale brown



YS23
(LDS87)
purple red



YS25
(LDS48)
olive brown

PUxx

100% Polyurethane
740 g/rm



PU01
(21.5816)
black grey



PU02
(21.7609)
grey blue



PU03
(21.9533)
antique pink



PU04
(21.6441)
reed green



PU05
(21.7707)
pale brown



PU06
(21.7148)
light ivory



PU07
(21.7136)
oyster white



PU11
(21.7261)
cement grey



PU12
(21.7606)
green blue



PU15
(21.9527)
copper brown



PU22
(21.7608)
ocean blue

Rime

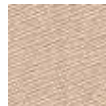
90% New wool worsted
10% Nylon
580 g/rm



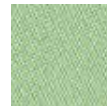
RI01
(151)
signal black



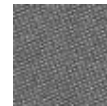
RI02
(721)
azure blue



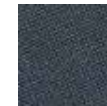
RI03
(521)
deep orange



RI04
(921)
may green



RI05
(641)
pale brown



RI11
(791)
black grey



RI13
(621)
strawberry red



RI15
(271)
grey brown



RI21
(131)
squirrel grey



RI31
(231)
olive grey

High-Performance-Group 4

In brackets: Order number of the manufacturer.

Rind-Nappa-leather



0781
signal black

Leather group 6

Leather Ascot*



SA01
(2900)
signal black



SA07
(2100)
signal white



SA17
(2110)
cream



SA22
(2560)
grey blue



SA51
(2760)
quartz grey



SA82
(2522)
pastel blue



SA85
(2180)
grey beige



SA93
(2430)
claret violet



SAA1
(2120)
pebble grey



SAB1
(2175)
beige grey



SAC1
(2655)
platinumium
grey



SAE5
(2260)
ochre brown



SAG5
(2865)
sepia brown

Leather group 7

Duotec ESD

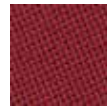
89% Polyacryl
2% Lycra
535 g/rm



9801
black



9802
blue



9803
red



9811
grey

In brackets: Order number of the manufacturer.

* Fabric no. available as electronic / OFML data for
Leather Ascot: AS..

Remark: Additional colours on request.

Meshes knitted

Hero



black
8010



anthracite
8009

Goal-Air

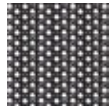


black
8001



anthracite
8009

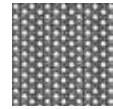
JOYCE^{IS3}



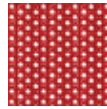
8240
uni, black
KW40



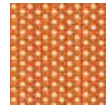
8244
uni, white
KW44



8248
anthracite
KW48



8223
flame red
KW23



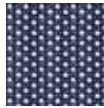
8213
traffic orange
KW13



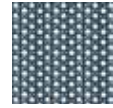
8214
may green
KW14



8225
beige grey
KW25



8262
cobalt blue
KW62



8272
pastel blue
KW72

Cursive: Corresponding mesh cover for the seat.

Softback knitted

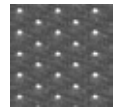
JOYCE^{IS3}



8340
uni, black
KW40



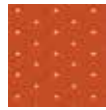
8344
uni, white
KW44



8348
anthracite
KW48



8323
flame red
KW23



8313
traffic orange
KW13



8314
may green
KW14



8325
beige grey
KW25



8362
cobalt blue
KW62



8372
pastel blue
KW72

Cursive: Corresponding mesh cover for the seat.

Membran

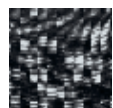
AirPad



black
8840



white
8844



uni, black
8140
MH01



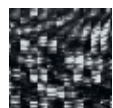
uni, white
8144



anthracite
8148
MH41

Woven fabric

PURE^{IS3}, MOVY^{IS3}, VINTAGE^{IS5}, AIM^{IS1}, EVERY^{IS1}, BUDDY^{IS3}



uni, black
8140
MH01



uni, white
8144



anthracite
8148
MH41

MESHES/MEMBRANE/INTEGRAL FOAM/FRAME- AND COATING COLOURS/COLOUR FOR PLASTIC PARTS

Woven fabric

PURE^{IS3}, MOVY^{IS3}, AIM^{IS1}, EVERY^{IS1}, BUDDY^{IS3}



8123
flame red
MH03



8113
traffic orange
MH13



8114
may green
MH14



8125
beige grey
MH25



8162
cobalt blue
MH62



8172
pastel blue
MH72

Cursive: Fabric colours as per the Manhattan colour palette.

Integral foam

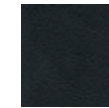
KINETIC^{IS5}



black
2000



grey
2002



black
..217



brilliant silver
..234

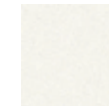


chromed
..324



polished
..304

Frame- and coating colours



white
..283

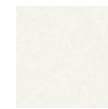


brushed silver,
polished
..349

Colour for plastic parts



black
3217



white
3283



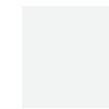
fresh yellow
3400



soft red
3401



ice blue
3402



light grey
3261



smart white
3403



anthracite
3231



blue
3206



red
3207



green
3245



yellow
3208

The variations and colours of the models you will find in the pricing table of each product family. The Table also shows the relevant ordering reference number.